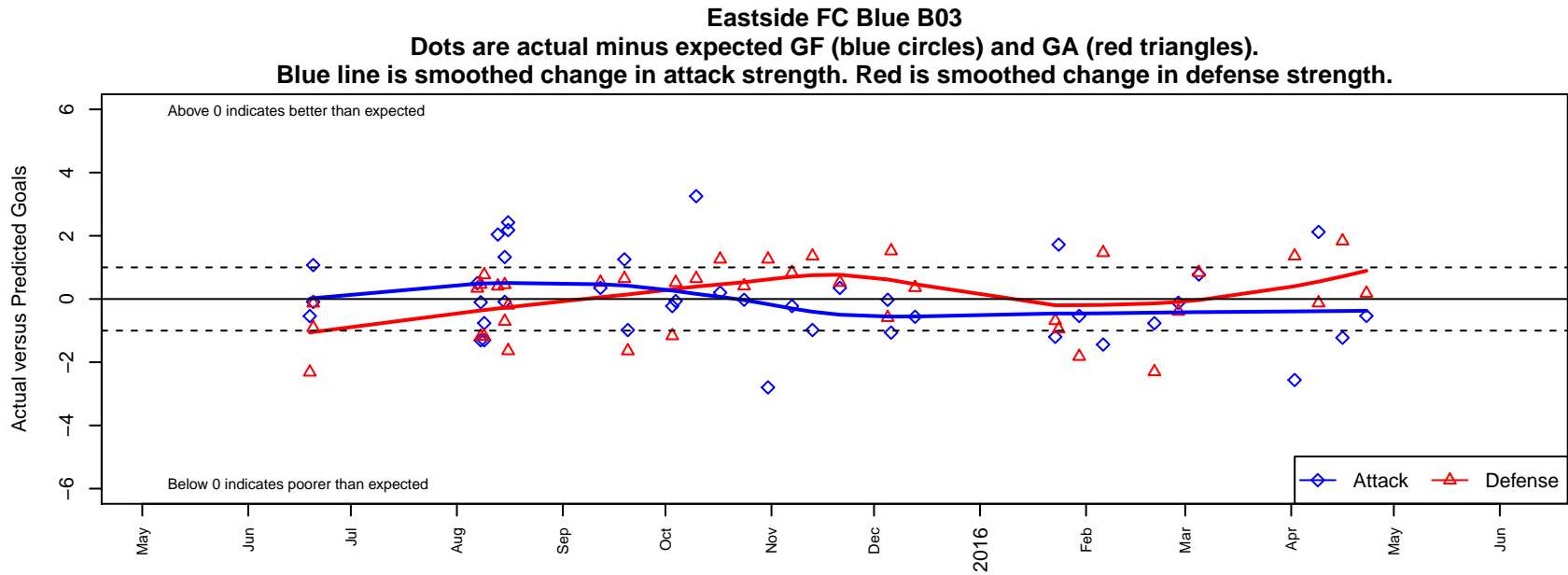


Eastside FC Blue B03

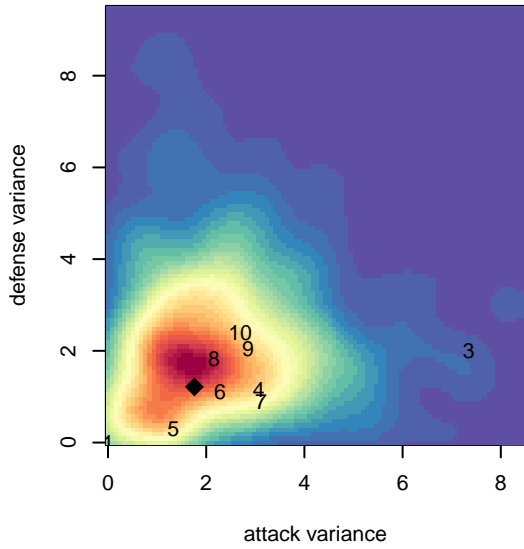
Eastside FC
 Preston, WA
 B03 total strength=772
 attack=0.98 defense=0.84
 fall league = RCL B03 Div 3, RCL B03 7V2
 spr league = Win RCL B03 Div 2

alt names used:
 Eastside FC B03 Blue C
 10 Eastside FC B03 Blue C
 EASTSIDE FC B03 BLUE C (TBA)
 Eastside FC B03 Blue C
 Eastside FC B03 Blue C
 Eastside FC B03 Blue C
 Eastside FC B03 Blue C

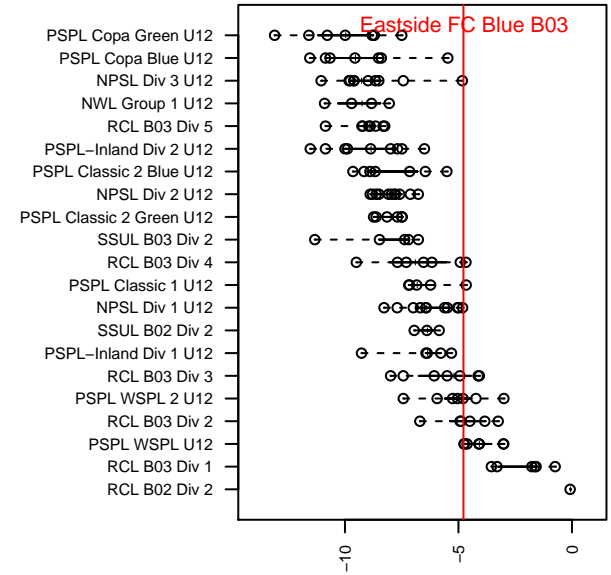
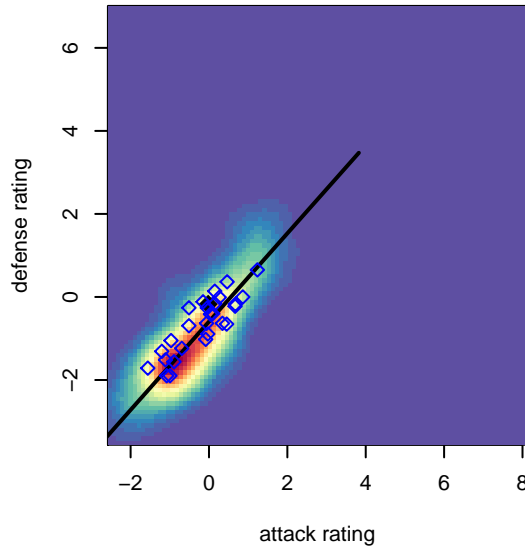
Venues played:
 2015 Rainier Challenge Samba U12
 2015 Pacific Coast Challenge U12
 2015 Bigfoot Group B U12
 2015 RCL B03 Div 3
 2015 RCL B03 7V2
 2015 Win RCL B03 Div 2
 2015 WYS Presidents Cup B03 Division 1



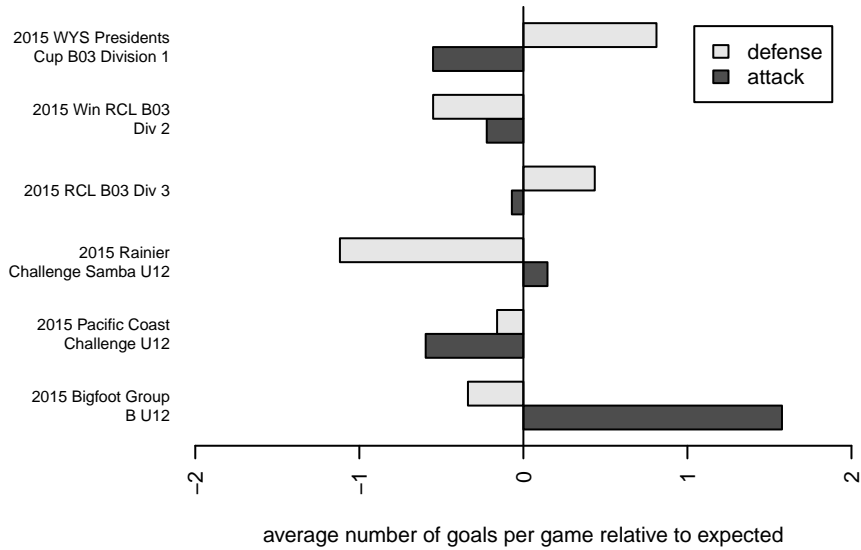
**attack and defense variance (black dot)
relative to other teams
and top 10 in region**



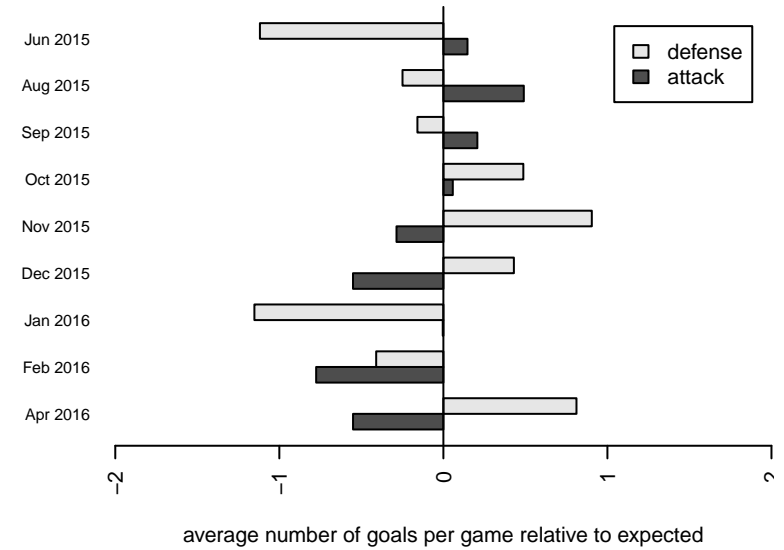
**attack and defense rating
relative to others at age
and all opponents in last 13 months**



Performance relative to 13 month average



Performance relative to 13 month average



| date | home | | away | | venue | pred.home | pred.away |
|------------|----------------------------|---|----------------------------|---|--|-----------|-----------|
| 2016-04-23 | Slammers Orange B03 | 1 | Eastside FC Blue B03 | 1 | 2015 WYS Presidents Cup B03 Division 1 | 1.18 | 1.54 |
| 2016-04-16 | SSC Shadow A B03 | 0 | Eastside FC Blue B03 | 0 | 2015 WYS Presidents Cup B03 Division 1 | 1.83 | 1.22 |
| 2016-04-09 | Eastside FC Blue B03 | 4 | 3 Rivers Green B03 | 2 | 2015 WYS Presidents Cup B03 Division 1 | 1.88 | 1.87 |
| 2016-04-02 | Eastside FC Blue B03 | 0 | FC Alliance B B03 | 0 | 2015 WYS Presidents Cup B03 Division 1 | 2.56 | 1.36 |
| 2016-03-05 | SSC Shadow A B03 | 1 | Eastside FC Blue B03 | 2 | 2015 Win RCL B03 Div 2 | 1.83 | 1.22 |
| 2016-02-28 | Eastside FC Blue B03 | 1 | Seattle United Tango B03 | 2 | 2015 Win RCL B03 Div 2 | 1.12 | 1.61 |
| 2016-02-21 | Snohomish United Black B03 | 4 | Eastside FC Blue B03 | 0 | 2015 Win RCL B03 Div 2 | 1.70 | 0.77 |
| 2016-02-06 | Eastside FC Blue B03 | 0 | 3 Rivers Black B03 | 1 | 2015 Win RCL B03 Div 2 | 1.44 | 2.46 |
| 2016-01-30 | Slammers Orange B03 | 3 | Eastside FC Blue B03 | 1 | 2015 Win RCL B03 Div 2 | 1.18 | 1.54 |
| 2016-01-24 | Eastside FC Blue B03 | 3 | Crossfire Premier B B03 | 2 | 2015 Win RCL B03 Div 2 | 1.28 | 1.05 |
| 2016-01-23 | Eastside FC Blue B03 | 0 | WA Rush B03 | 3 | 2015 Win RCL B03 Div 2 | 1.20 | 2.31 |
| 2015-12-13 | FC Alliance B B03 | 1 | Eastside FC Blue B03 | 2 | 2015 RCL B03 7V2 | 1.36 | 2.56 |
| 2015-12-06 | PacNW Blue B03 | 0 | Eastside FC Blue B03 | 0 | 2015 RCL B03 Div 3 | 1.52 | 1.07 |
| 2015-12-05 | NWN Blue B03 | 1 | Eastside FC Blue B03 | 3 | 2015 RCL B03 Div 3 | 0.41 | 3.02 |
| 2015-11-21 | Harbor Premier Green B03 | 1 | Eastside FC Blue B03 | 2 | 2015 RCL B03 Div 3 | 1.52 | 1.65 |
| 2015-11-13 | Eastside FC Blue B03 | 1 | WPFC White B03 | 0 | 2015 RCL B03 Div 3 | 1.98 | 1.36 |
| 2015-11-07 | SSC Shadow A B03 | 1 | Eastside FC Blue B03 | 1 | 2015 RCL B03 Div 3 | 1.83 | 1.22 |
| 2015-10-31 | Kitsap Alliance FC Red B03 | 0 | Eastside FC Blue B03 | 0 | 2015 RCL B03 Div 3 | 1.26 | 2.80 |
| 2015-10-24 | Eastside FC Blue B03 | 3 | NWN Blue B03 | 0 | 2015 RCL B03 Div 3 | 3.02 | 0.41 |
| 2015-10-17 | Eastside FC Blue B03 | 3 | Kitsap Alliance FC Red B03 | 0 | 2015 RCL B03 Div 3 | 2.80 | 1.26 |
| 2015-10-10 | Eastside FC Blue B03 | 8 | PacNW White B03 | 0 | 2015 RCL B03 Div 3 | 4.75 | 0.64 |
| 2015-10-04 | Eastside FC Blue B03 | 1 | PacNW Blue B03 | 1 | 2015 RCL B03 Div 3 | 1.07 | 1.52 |
| 2015-10-03 | Eastside FC Blue B03 | 1 | SSC Shadow A B03 | 3 | 2015 RCL B03 Div 3 | 1.22 | 1.83 |
| 2015-09-20 | WPFC White B03 | 3 | Eastside FC Blue B03 | 1 | 2015 RCL B03 Div 3 | 1.36 | 1.98 |
| 2015-09-19 | PacNW White B03 | 0 | Eastside FC Blue B03 | 6 | 2015 RCL B03 Div 3 | 0.64 | 4.75 |
| 2015-09-12 | Eastside FC Blue B03 | 2 | Harbor Premier Green B03 | 1 | 2015 RCL B03 Div 3 | 1.65 | 1.52 |
| 2015-08-16 | Eastside FC Blue B03 | 6 | Eastside FC Grey B03 | 1 | 2015 Bigfoot Group B U12 | 3.58 | 0.80 |
| 2015-08-16 | Eastside FC Blue B03 | 4 | NSC Galaxy B03 | 3 | 2015 Bigfoot Group B U12 | 1.82 | 1.36 |

| date | home | | away | | venue | pred.home | pred.away |
|-------------|------------------------------|---|----------------------|---|----------------------------------|------------------|------------------|
| 2015-08-15 | Crossfire Select Lopez B03 | 0 | Eastside FC Blue B03 | 7 | 2015 Bigfoot Group B U12 | 0.45 | 7.09 |
| 2015-08-15 | Snohomish United Red B03 | 1 | Eastside FC Blue B03 | 7 | 2015 Bigfoot Group B U12 | 0.29 | 5.67 |
| 2015-08-13 | Mercer Island FC Arsenal B03 | 0 | Eastside FC Blue B03 | 7 | 2015 Bigfoot Group B U12 | 0.41 | 4.96 |
| 2015-08-09 | Eastside FC Blue B03 | 1 | TC United Blue B03 | 0 | 2015 Pacific Coast Challenge U12 | 1.76 | 0.76 |
| 2015-08-09 | Whatcom Rangers Blue B03 | 2 | Eastside FC Blue B03 | 0 | 2015 Pacific Coast Challenge U12 | 0.82 | 1.31 |
| 2015-08-08 | Junior Rangers Academy B03 | 0 | Eastside FC Blue B03 | 7 | 2015 Pacific Coast Challenge U12 | 0.46 | 7.10 |
| 2015-08-08 | Whatcom Rangers Blue B03 | 2 | Eastside FC Blue B03 | 0 | 2015 Pacific Coast Challenge U12 | 0.82 | 1.31 |
| 2015-08-07 | Eastside FC Blue B03 | 5 | TC United White B03 | 0 | 2015 Pacific Coast Challenge U12 | 4.50 | 0.34 |
| 2015-06-20 | PacNW Maroon B03 | 4 | Eastside FC Blue B03 | 1 | 2015 Rainier Challenge Samba U12 | 3.09 | 1.09 |
| 2015-06-20 | FPSC Fury Black B03 | 2 | Eastside FC Blue B03 | 3 | 2015 Rainier Challenge Samba U12 | 1.87 | 1.93 |
| 2015-06-19 | Eastside FC Blue B03 | 0 | WPFC Black B03 | 7 | 2015 Rainier Challenge Samba U12 | 0.54 | 4.68 |